

PROGRESS REPORT ON OUR WORLD COMMUNITY SERVICE PROJECT IN LIBANO COLOMBIA

Rotary Clubs of Mission Viejo, CA and Libano, Colombia

BARRIO HOUSING PROJECT

BARRIO HOUSING FACT SHEET

30 Houses to be made of Seismic Resistant Guada Material
House Size: Approx. 18ft x 36ft)
Rooms: 3 Bedrooms, 1 Living Room, 1 Kitchen, 1 Bathroom, Patio
Included in estimating constructions costs are plumbing, sewer connection, electrical connection and water tank on roof.

We have finished all of the water and sewer construction for the project. We are very close to receiving the electrical approval from the Electric Company which will free us up to start putting in the street lights and cables to connect electricity to the houses.

The government subsidy is waiting for us to finish this part and then they will make a complete study of the project to make sure it conforms to all of their requirements

October 24, 2005



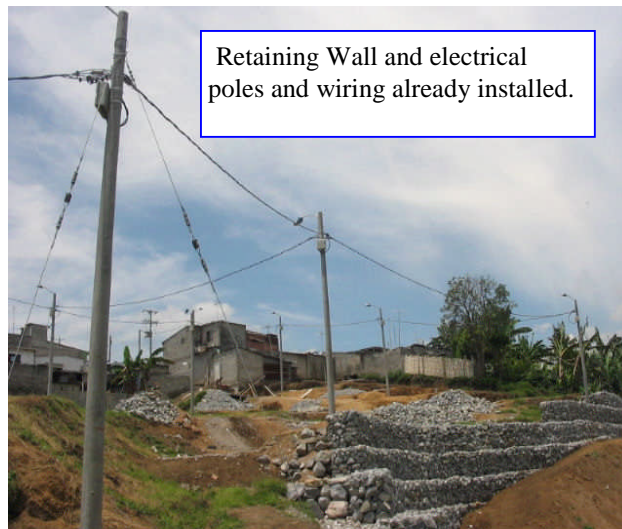
Transformer has been installed. This will supply electricity to all 30 Homes.



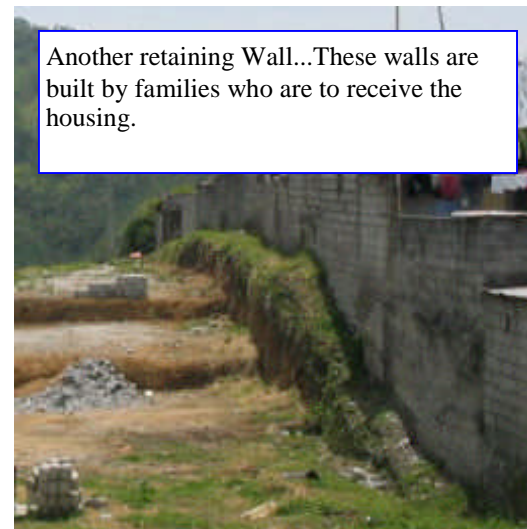
Model Home, Electrical Poles and Retaining Wall . Model Home is to determine final costs to be submitted to the Colombian Government for approval and to receive government subsidy



Model Home waiting for Approval from Colombian Government and funds to cover 70% of costs for the 30 homes to be built



Retaining Wall and electrical poles and wiring already installed.



Another retaining Wall...These walls are built by families who are to receive the housing.